

Class Information

Location: Classes are held in the Gloucester County Office of Government Services Building Auditorium at 1200 N. Delsea Drive in Clayton.

Time: Wednesdays from 9 am to noon. Starting January 11, 2012.

Who should attend? Anyone with an interest in gardening.

Cost: \$15.00 per class



Registration: Return registration form with check payable to GCBA and Mail to:

*Mary Cummings
RCE of Gloucester County
1200 North Delsea Drive
Clayton, NJ 08312*

*For more information or to register via email contact :
cummings @njaes.rutgers.edu*



Gardening School Sign Up

Sign up for: Class Name	Date	Price
<input type="checkbox"/>		
<input type="checkbox"/>		
<input type="checkbox"/>		
<input type="checkbox"/>		
<input type="checkbox"/>		
<input type="checkbox"/>		
<input type="checkbox"/>		

Subtotal: _____

Total: _____

Name _____

Address _____

Phone/ email _____

Return Registration form with check payable to GCBA and mail to

Mary Cummings
RCE of Gloucester County
1200 North Delsea Drive Bldg. A
Clayton, NJ 08312



RUTGERS

New Jersey Agricultural Experiment Station

■ Cooperative Extension

GARDENING SCHOOL



856-307-6450 #1

856-307-6476 fax

<http://gloucester.njaes.rutgers.edu>

Robert M. Damming, Freeholder Director

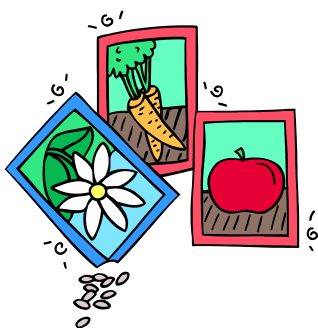
Frank DiMarco, Freeholder Liaison

Gardening School



Rutgers, New Jersey Agricultural Experiment Station, Cooperative Extension of Gloucester County Home Gardening School is designed for individuals who would like to learn more about specific areas of horticulture. Anyone with an interest in gardening is invited to attend as many sessions as they choose. No previous education or training is necessary.

Home Gardening School participants receive in-depth training from Rutgers faculty and staff.



Class Schedule

Houseplants 101- Come learn how to better care for your indoor foliage plants.	January 11, 2012	Landscape Design and Native Plants-Come learn how to make your house more beautiful by improving the landscape. Emphasis will be placed on using native plants.	March 21, 2012
Weed Identification and Control- In this class you will learn to identify common weeds and management practices to eliminate and control them.	January 18, 2012	Wildlife- friend or Foe- In this class you will learn the common wildlife problems in the home landscape and tips on how to manage them.	March 28, 2012
Integrated Pest Management- In this class you will learn the definition of IPM and how it is practiced.	January 25, 2012	Earth Friendly Lawn Care- All aspects of lawn care will be discussed including selection of grasses, overview of IPM with lawns, pest control and ID. Emphasis will be placed on best management practices.	April 4, 2012
Plant Propagation- You will learn propagation techniques and the best time to propagate plants.	February 1, 2012	What's wrong with my tree? In this class you will get a general overview of how plants function and various infectious and non-infectious causes of disease	April 11, 2012
Get the dirt on Soil - In this class you will get an overview of soil including soil types, nutrients, pH and topography. Information will also be given on how to improve your soil for better plant growth.	February 8, 2012	Pruning Trees and Shrubs- In this class you will learn proper pruning techniques along with the proper time to prune .	April 18, 2012
Vegetable Gardening- In this class you will learn the principles of successful vegetable gardening.	February 15, 2012	Annuals and Perennials for year round color.	April 25, 2012
Caring for Your Home Lawn- Insect pests and diseases will be covered. You will learn the common causes of insects and disease and how to control them.	February 22, 2012	Growing Fruit in the Home Garden- This class provides information on how to successfully grow fruit.	May 2, 2012
Bugs, bugs, bugs - An overview of insects and related arthropods. Participants will learn to identify key structural pests and will learn various management strategies including cultural, biological and chemical controls	February 29, 2012	What's bugging your trees and shrubs?- In this class you will learn the common insects and mites that could be infesting your landscape.	May 9, 2012
Gardening Naturally- In this class you will learn how to choose plants that need minimal maintenance. The emphasis of this course is to teach participants to garden using non-chemical methods.	March 14, 2012	Plant Materials- Learn to identify common trees and shrubs. Placement and care will also be discussed.	May 16, 2012
		Composting- Participants will learn how to save money and improve their soil.,	May 23, 2012

Cooperating Agencies: Rutgers, The State University of New Jersey, U.S. Department of Agriculture, and County Boards of Chosen Freeholders. Rutgers Cooperative Extension, a unit of the Rutgers New Jersey Agricultural Experiment Station, is an equal opportunity program provider and employer.